



CASE STUDY:

HAWTHORNE WILLOWBROOK APARTMENT COMPLEX

The Hawthorne Willowbrook apartment complex was looking to expand upon the amenities offered to residents by adding a 1,200 ft² fitness center. To do so, they would be removing one of the few remaining vegetated areas in the complex, meaning that additional stormwater controls would be required within the site's already limited space.

Hawthorne Willowbrook partnered with Site Design, Inc., to determine a location for the construction of the fitness center, adjacent to the existing clubhouse and pool. To make this feasible, the designers needed to utilize a retaining wall that would reduce grade limitations and locate the stormwater storage underground to offset the increased runoff.

Thanks to a recent presentation given by the StormTank team, Site Design, Inc., knew who to contact to develop a solution for the Hawthorne Willowbrook project. The StormTank Pack was chosen as an ideal stormwater management system for the area as it did not need to support any heavy loads from vehicular traffic.

Installed immediately adjacent to the new fitness center, the StormTank Pack provided the necessary capacity for runoff mitigation. It was delivered to the site pre-assembled, allowing the contractor to complete the installation quickly and move on to the next part of the site's construction.



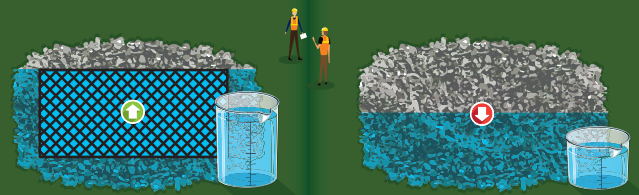
Traditional Stone Systems



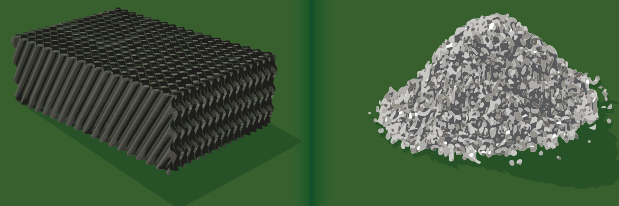
LESS Excavating than Traditional Stone Systems



LESS Material than Traditional Stone Systems



MORE Void Space than Traditional Stone Systems

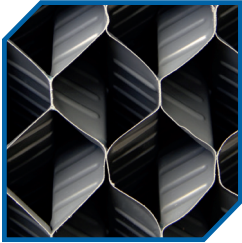


✓	\$\$	MATERIAL & LABOR	\$	✓
✓	\$	EXCAVATION	\$\$	
✓	\$	BACKFILL	\$\$	
	\$	TOTAL	\$\$	

LOWER Total Cost than Traditional Stone Systems

THE PACK

The StormTank Pack is the light-duty solution for subsurface stormwater management. It provides a cost effective alternative for non-load-bearing applications and is commonly utilized under landscaped areas such as parks, plazas, and backyards. The Pack is designed for optimum infiltration and integration in bio-retention and rainwater harvesting applications



LARGE VOID SPACE

With its 95 percent void space, the Pack provides a substantial improvement over standard crushed stone structures, which only yield about a 40 percent void space.



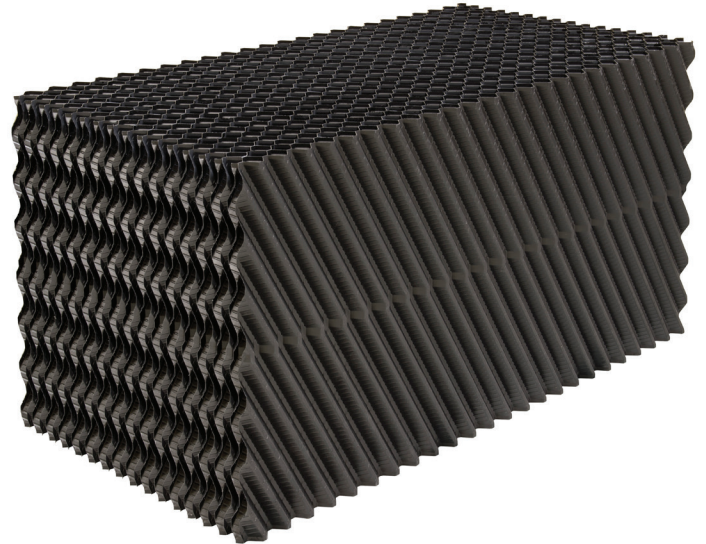
EASY RUNOFF DISTRIBUTION

The Pack's crossflow configuration allows runoff to spread across the media as it enters the system, evenly distributing the runoff to the base



STRUCTURAL INTEGRITY

Dedicated glue joints ensure precise and complete bonds throughout the entire pack and yield uniform flute sizes to enhance strength.



NO ASSEMBLY

The Pack is shipped pre-assembled to the job site, providing for ease of installation and reduced labor costs.



LAYOUT FLEXIBILITY

To accommodate layout variations, the Pack can be cut to any length. It is standardly available in 12-inch (305 mm) and 24-inch (610 mm) heights.



EASY MAINTENANCE

The Pack is designed to prevent debris from entering the system, eliminating the need for cleaning.

ADDITIONAL STORMTANK PRODUCTS



THE SHIELD

The Stormtank Shield provides a low-cost solution for stormwater pretreatment by reducing pollutant discharge.



THE MODULE

The StormTank Module is a subsurface stormwater storage unit load-rated for use under surfaces such as parking lots, athletic fields, and parks.



STORMTANK.COM
info@stormtank.com
+1.610.374.5109